

Properly and quickly assemble pipe joints each and every time. Improper installation and over-insertion can contribute to the build up of damaging stresses in pipe joints. The MEGA-STOP is a safe and economical “**over-insertion**” solution.

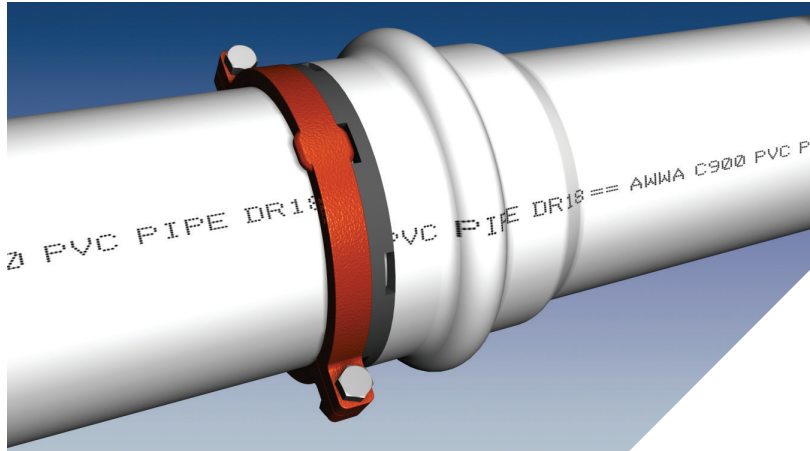


Image depicts 8 inch MEGA-STOP Bell Stop on 8 inch AWWA C900 PVC pipe.

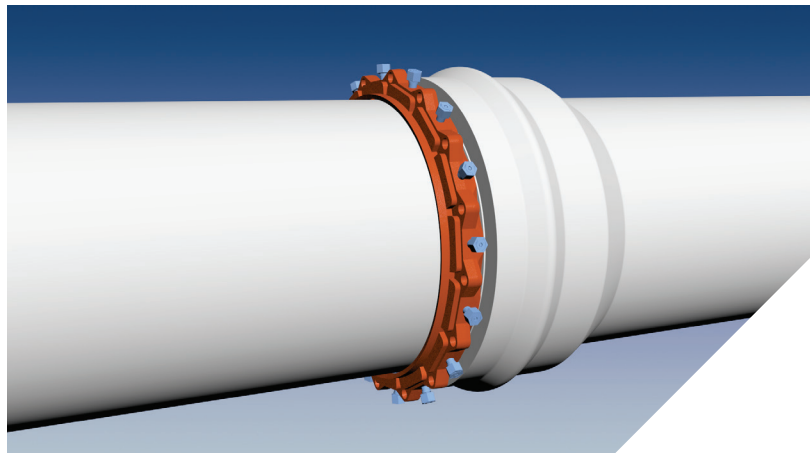


Image depicts 16 inch MEGA-STOP Bell Stop on 16 inch AWWA C900 PVC pipe. Twist-Off Nuts shown.

| Nominal Pipe Size | Series Number | Approximate Weight (lbs) | Rated “Push” Load (Max. lbf) |
|-------------------|---------------|--------------------------|------------------------------|
| 4                 | 5004          | 3.5                      | 10,000                       |
| 6                 | 5006          | 6.5                      | 10,000                       |
| 8                 | 5008          | 8.0                      | 10,000                       |
| 10                | 5010          | 11.5                     | 10,000                       |
| 12                | 5012          | 15.5                     | 10,000                       |
| 14                | 5014          | 47.6                     | 10,000                       |
| 16                | 5016          | 28.6                     | 15,000                       |
| 18                | 5018          | 61.8                     | 15,000                       |
| 20                | 5020          | 70.9                     | 15,000                       |
| 24                | 5024          | 92.9                     | 15,000                       |
| 30                | 5030          | 128.5                    | 15,000                       |
| 36                | 5036          | 161.3                    | 15,000                       |

NOTE: For applications or loads other than those shown, please contact EBAA for assistance.

#### Features and Applications:

- Allows for expansion/contraction of the pipe and permitted joint deflection with the exclusive Expansion Retention Spring—ERS
- Proper use assures assembly of every PVC joint is in compliance with the pipe manufacturer’s installation recommendations and requirements.
- Easy to install in the field
- Eliminates “lost” pipe resulting from over-insertion\*
- Constructed of Traceable ASTM A536 Ductile Iron
- MEGA-BOND® Restraint Coating System
- For use on the pipe spigot at a C900 PVC Pipe or C907 PVC fitting bell
- **Conventional Open Cut Installation**
  - Facilitates quick, accurate, and proper assembly of PVC pipe joints
  - Simple, visual inspection of the assembled joint
  - Protects previously assembled joints\*\*
- **Casing Installation**
  - Prevents over-insertion when pushing pipe through casings. The push load must be limited to the listed maximum rated push load
  - Maintains the ability of the pipe to expand and contract in response to changes in temperature and/or soil movement
- **Horizontal Directional Drilling Installation**
  - Optimal for short HDD applications such as road crossings and locations with frequent fitting requirements
  - Use of standard bell and spigot pipe saves money compared to specialty pipe joints
  - Does not require an extended entry pit or staging area typical of fused piping
  - Accommodates the need for multiple fittings in congested areas

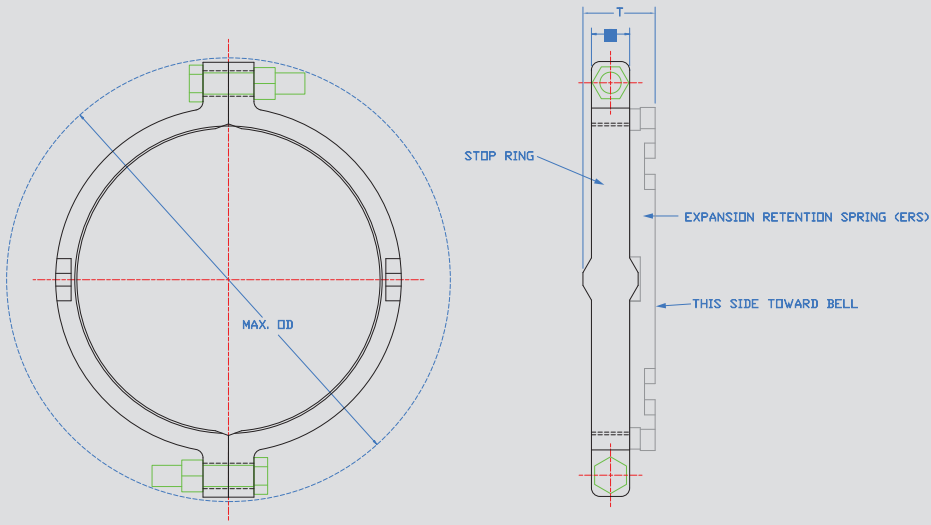
\*An over-inserted pipe joint can have a laying length that is more than two inches shorter than specified. In a pipeline of 25,000 feet that would result in a reduction of at least 208 feet or a loss of more than 10 pieces of pipe.

\*\*The peak force required to assemble a push-on joint can cause previously assembled joints to be over-inserted unless measures are taken to prevent over-insertion.

# Series 5000 4 - 12 inch Submittal Reference Drawing

EBAA IRON

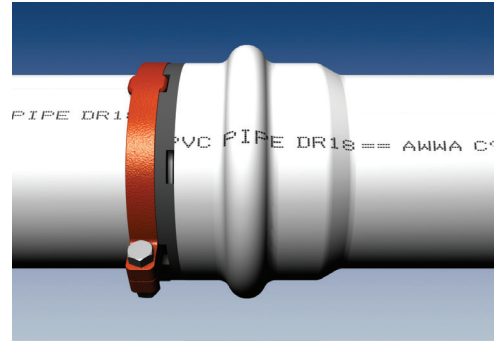
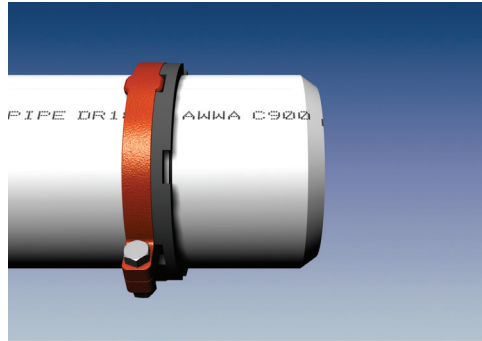
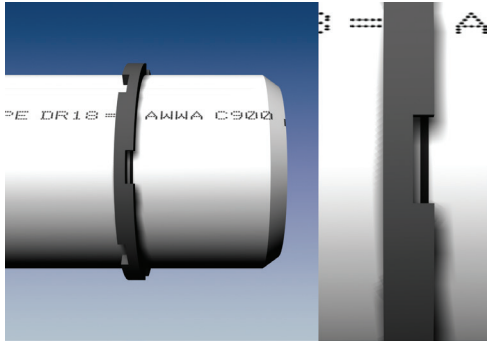
MADE IN USA



| Nominal Pipe Size | Series Number | Push Load (lbs) | Maximum O.D. | C    | T    | Bolt (Qty - Size) |
|-------------------|---------------|-----------------|--------------|------|------|-------------------|
| 4                 | 5004          | 10,000          | 9.2          | 1.13 | 1.88 | 2 - 5/8 x 3       |
| 6                 | 5006          | 10,000          | 11.1         | 1.13 | 1.88 | 2 - 5/8 x 3       |
| 8                 | 5008          | 10,000          | 13.1         | 1.13 | 1.88 | 2 - 5/8 x 3       |
| 10                | 5010          | 10,000          | 15.7         | 1.13 | 1.88 | 2 - 5/8 x 3 1/2   |
| 12                | 5012          | 10,000          | 18.3         | 1.13 | 1.88 | 2 - 5/8 x 3 1/2   |

NOTE: Dimensions are in inches (± 1%) and are subject to change without notice.

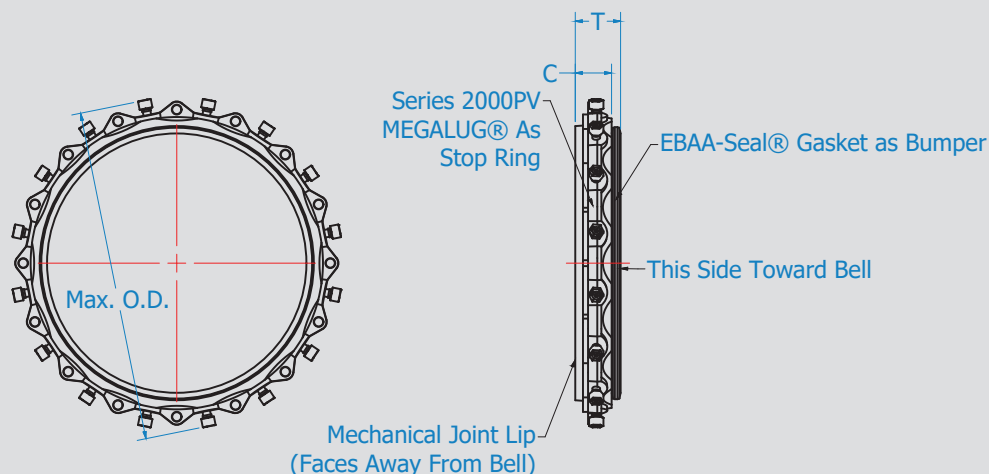
## Installation Instructions



1. The Series 5000 MEGA-STOP Bell Protection System is designed to prevent over-insertion of the spigot or plain end of the pipe into a push on pipe bell, while allowing the pipe to properly expand or contract. The Series 5000 MEGA-STOP is used on AWWA C900 PVC Pipe, and consists of one split serrated MEGA-STOP Bell Stop Ring and one Expansion Retention Spring (ERS).
2. Place the Expansion Retention Spring (ERS) on the spigot and position it so that the manufacturer's reference mark is visible through the front notches. If the mark is missing due to fading or a cut pipe, place a mark at the pipe manufacturer's recommended measurement, chamfering the pipe may also be recommended by the pipe manufacturer. (The ERS is bidirectional. Once placed on pipe the notches nearest the pipe chamfer are the front notches.)
3. Disassemble the halves of the MEGA-STOP and reassemble them on the spigot against the back side of the ERS with the extensions of the MEGA-STOP inside of the notches on the back side of the ERS. Tighten the side bolts evenly to a torque of 70 ft-lbs.
4. Assemble the joint in accordance with the pipe or fitting manufacturer's installation instructions.

EBAA IRON

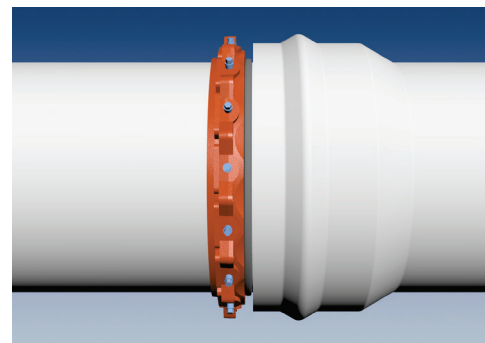
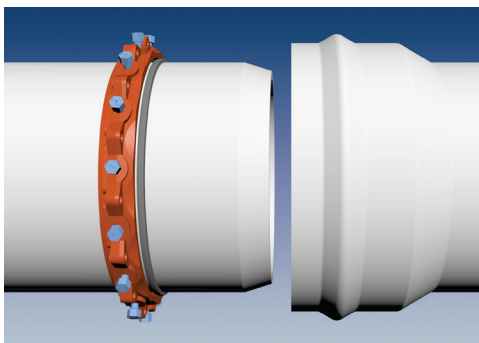
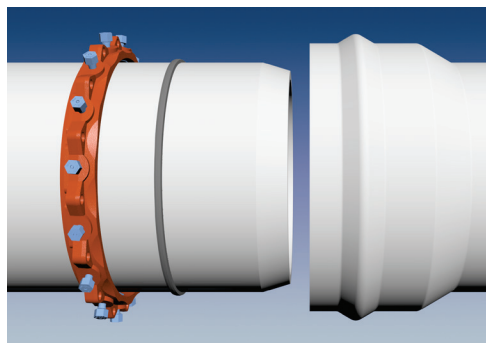
MADE IN USA



| Nominal Pipe Size | Series Number | Push Load (lbs) | Maximum O.D. w/ Nuts Twisted Off | C    | T    | Wedge Count |
|-------------------|---------------|-----------------|----------------------------------|------|------|-------------|
| 14                | 5014          | 10,000          | 20.90                            | 3.00 | 3.88 | 10          |
| 16                | 5016          | 15,000          | 23.00                            | 3.00 | 3.88 | 12          |
| 18                | 5018          | 15,000          | 25.10                            | 3.00 | 3.88 | 12          |
| 20                | 5020          | 15,000          | 27.20                            | 3.00 | 3.88 | 14          |
| 24                | 5024          | 15,000          | 31.50                            | 3.50 | 4.38 | 16          |
| 30                | 5030          | 15,000          | 37.70                            | 3.50 | 4.75 | 20          |
| 36                | 5036          | 15,000          | 44.00                            | 3.50 | 4.75 | 24          |

NOTE: Dimensions are in inches ( $\pm 1\%$ ) and are subject to change without notice.

### Installation Instructions



1. The Series 5000 MEGA-STOP Bell Protection System is designed to prevent over-insertion of the spigot or plain end of the pipe into a push-on pipe bell, while allowing the pipe to properly expand or contract. The Series 5000 MEGA-STOP is used on AWWA PVC Pipe, and consists of one wedge-style MEGA-STOP Bell Stop Ring and one Expansion Retention Spring (ERS).
2. Place the 2000PV restraint on spigot end of pipe with lip facing away from bell.
3. Place EBAA Seal gasket on spigot end of pipe.
4. Assemble bell and spigot per manufactures recommendations with respect to the insertion reference line.
5. Slide gasket flush with bell of pipe as shown above.
6. Slide 2000PV restraint flush with gasket and tighten the torque limiting twist-off nuts in a clockwise direction (direction indicated by arrow on top of nut) until all wedges are in firm contact with the pipe surface. Continue tightening in an alternating manner until all of the nuts have been twisted off.

### Sample Specification

Devices for the prevention of “over-insertion” of AWWA C900 PVC Pipe spigots or plain ends into push-on bell joints shall consist of the following: The bell stop shall be manufactured of ductile iron conforming to ASTM A536. The bell stop shall be coated using MEGA-BOND® (For complete specifications on MEGA-BOND visit [www.ebaa.com](http://www.ebaa.com).) The device shall incorporate a Expansion Retention Spring allowing compensation for expansion and contraction of the pipe, along with visual inspection viewports of the PVC pipe insertion reference mark. The combination of the two shall be the Series 5000 MEGA-STOP® Bell Protection System, as manufactured by EBAA Iron, Inc.



### EBAA IRON Sales, Inc.

P.O. Box 857, Eastland, TX 76448

Tel: (254) 629-1731

Fax: (254) 629-8931

(800) 433-1716 within US and Canada

[contact@ebaa.com](mailto:contact@ebaa.com)

[www.ebaa.com](http://www.ebaa.com)